




njea®

POLITICAL
ACTION
GUIDE

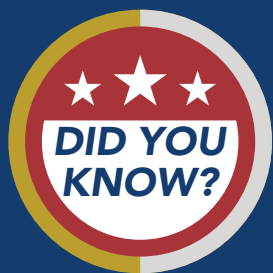
2
0
2
2

Opportunities to Learn

If you are interested in running for office or learning the nuts and bolts of political organizing, the following programs might interest you:

- NJEA Summer Leadership Conference
- NJEA Winter Leadership Conference
- Center for American Women and Politics Ready to Run cawp.rutgers.edu
- NEA See Educators Run
- Emerge New Jersey emergenj.org

If you are interested in participating in any of these programs, or are thinking about running for public office, contact the Government Relations Division at 609-599-4561.



NJEA
Government
Relations offers
scholarships for you!

*NJEA Political Action Guide 2022
courtesy of NJEA Government Relations*

★ Table of contents

Opportunities to learn	2
Introduction	
What does NJEA fight for?	3
Why does political action matter?	3
How are state policy decisions made?	
The two main ways	3
How a bill becomes a law	4
How administrative codes and regulations are made	5
Who makes important policy decisions?	
State government	5
Appointed education policymakers	5
County government	5
Local government	5
How does NJEA decide which candidates to support?	
NJEA PAC Operating Committee	6
How can you influence elected and appointed officials?	
Join your LAT	6
Support NJEA PAC	6
Stay informed	6
Resources for voters	6
What is PAC?	7
Attend your county's legislative dinner	8
Tips for contacting your lawmakers	9
State Board of Education members	9
Tips for contacting State Board members	9
NJEA leadership and staff	
Officers	10
NEA Directors	10
Government Relations Division	11
Government Relations Committee	12
Congressional Contact Committee	13
New Jersey Retirees' Education Association	14
NJREA Government Relations Committee	14
New Jersey Government Directory	
Executive Branch/Legislature	15
Congressional/Legislative district index	15
State lawmakers	18
Federal lawmakers	20
Dates to remember	
November school board, primary and general elections	21
April school elections	21
Municipal nonpartisan elections	21

What does NJEA fight for?

To help students be successful and ensure schools have the funding they need to maintain and improve their quality,

NJEA supports:

- Ensuring that contracts between school districts and our local associations are honored.
- Full-day preschool.
- Universal full-day kindergarten.
- Smaller class sizes, especially in earlier grades.
- Release time for parents to attend school functions.
- Healthy, safe and modern schools.
- Accountability standards for all public schools.
- Expansion of public school choice options.
- Human and civil rights, and social, racial and economic justice.
- Ensuring schools are not for profit.
- Ensuring public funds are used only for public schools.
- Equitable funding for economically stressed school districts.
- Adequate state funding for regular education programs.
- Aid for facilities and debt service.
- Funding for programs for at-risk and high-needs students.

During the pandemic, NJEA is fighting for:

- Resources to ensure educators and students can safely return to school
- Priority access to vaccines for educators
- Ensuring access to digital tools for students and staff
- Resources to address learning interruptions because of the pandemic

To ensure an outstanding education for every student while preserving a high-quality workforce,

NJEA supports:

- A fair evaluation system that relies on multiple measures of student progress.
- Expanded opportunities and rights for educational support professionals.
- Educator-driven professional development for certified and support staff.
- Two-year, state-funded mentoring for novice teachers.
- A defined benefit pension plan in retirement, as it is part of a school employee's compensation.
- Collective bargaining at the local level.
- Access to excellent health care for employees, with any premium-sharing subject to local bargaining.
- Local control over decisions that affect schools and communities.

Why does political action matter?

Almost every aspect of a school employee's job is determined by appointed or elected officials.

- Class sizes
- Wages
- School funding/resources for students
- Privatizing services
- Due process rights
- Pensions and health insurance
- How student test scores are used

If we want to exert influence over the issues that are important to us, our family, our profession and our community, we need to know:

- Who the appointed and elected decision makers are.
- What information they have BEFORE they make their decisions.

As NJEA members, our job is to be sure that policymakers at the local, state and federal levels hear directly from us on education issues. We know what students need to succeed. If we are absent from the process, we will allow important decisions about education to be determined by people who may have never set foot in a classroom or worked with a student.

This guide will provide you with information about these decision makers, your role in making sure the right people get to hold these positions, and what you can do to help them make the right decisions.

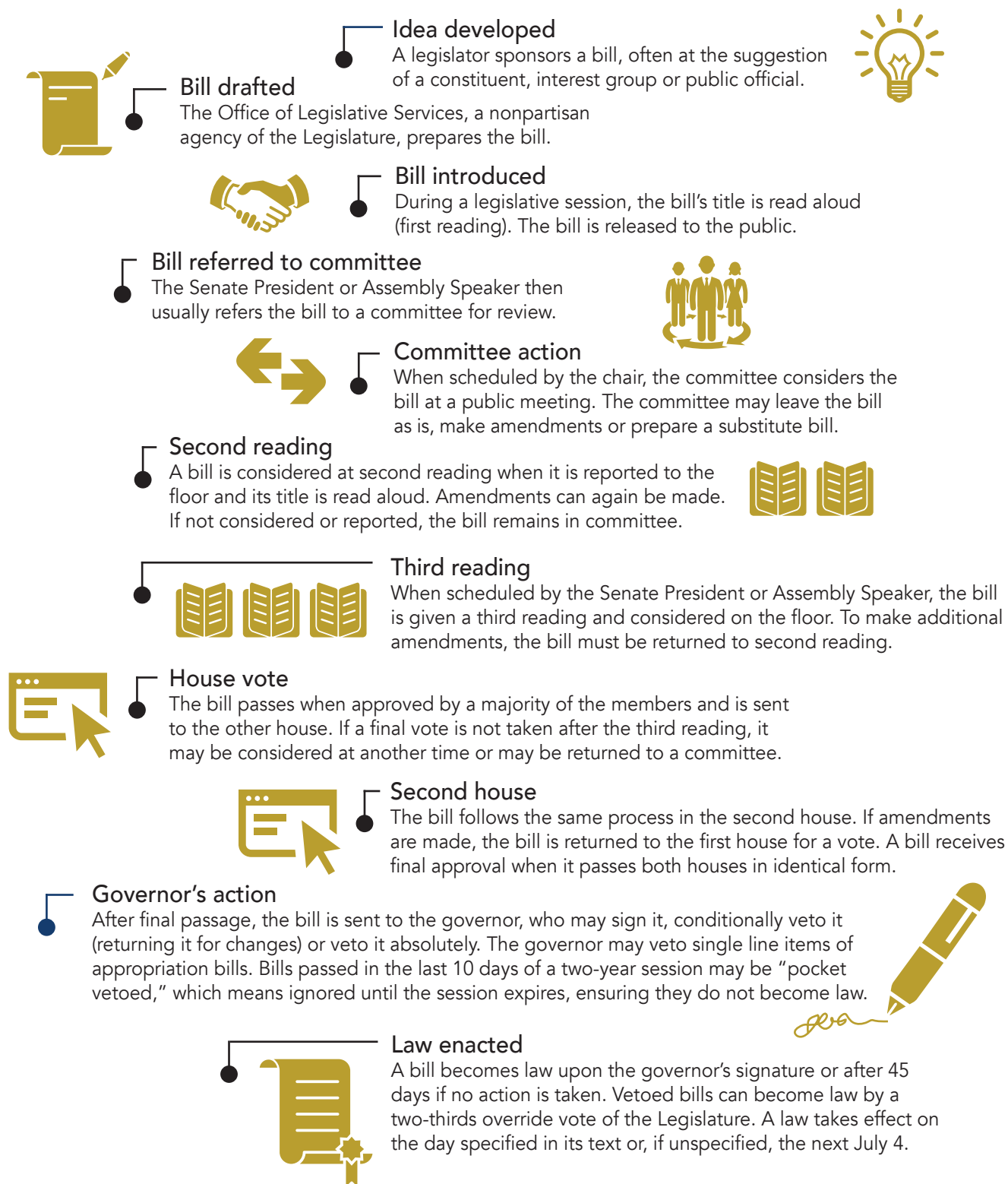
How are policy decisions made?

There are two main ways that policies affecting public schools and public school employees are made.

- The first is through the legislative process of developing and voting on bills that can then be approved or vetoed by the governor. If the bill is approved, it becomes law.
- The second way is through the State Board of Education. The New Jersey Department of Education proposes new code or revises existing regulations that the State Board of Education must approve for the change to go into effect.

Policies can also be created or changed by an executive order issued by the governor, a court decision or a federal law or regulation.

● How a bill becomes a law



★ How to find a bill online

To find a bill, go to njleg.state.nj.us and use the bill search tool on the right-hand side of the page. You can search by bill number (remember to use A for Assembly bills and S for Senate bills), sponsor or subject. You can read a bill's text, see its sponsors, find out where it is in the process and view any votes on the bill.

Who makes important policy decisions? How do these decision makers get their jobs?

STATE GOVERNMENT

The **governor**, who is elected by a popular vote every four years, implements state laws and oversees the operation of the state executive branch.

The governor has the power to:

- Sign bills into law or veto them.
- Recommend laws and call the Legislature into special session.
- Issue executive orders, which can be used to trigger emergency powers during a natural disaster, create a study or advisory commission, or exercise administrative powers (e.g., *begin a hiring freeze*).
- Appoint judges as well as commissioners to lead executive agencies, such as the Department of Education and the Department of Labor.

The **Legislature** has the power to enact laws and propose amendments to the New Jersey Constitution. Members of the Legislature are elected.

There are two houses of the Legislature—the Senate and the General Assembly. Assembly members are elected every two years. Senators are elected every four years, except for the term immediately following the Census, which is a two-year term. The Senate has the power to approve gubernatorial appointments of judges and other officials like the Commissioner of Education and members of the State Board of Education.

There are 40 legislative districts in New Jersey. Each has one senator and two assemblypersons.

APPOINTED EDUCATION POLICYMAKERS

The **Commissioner of Education** oversees the New Jersey Department of Education and supervises all public schools in the state. The commissioner makes policy recommendations and develops rules and regulations for the State Board of Education to consider. The commissioner apportions state aid to local school districts, decides legal controversies arising under school law, and makes sure local school districts are operating in accordance with all legal and regulatory requirements.

The **State Board of Education** adopts administrative code. Administrative code is the set of rules that implements laws passed by the Legislature and signed by the governor, or implements policy changes and court decisions, such as the rules about teacher evaluation, special education and charter schools.

The **Secretary of Higher Education** is the primary advisor to the governor on higher education initiatives and incentive programs. The secretary reviews requests for state support from institutions and works to ensure that students have access to high-quality higher education, as well as administering grant programs that help students.

COUNTY GOVERNMENT

A Board of County Commissioners governs each of New Jersey's 21 counties. County Commissioners are elected. These county government officials provide funds for county vocational schools, special services districts, education commissions and community colleges.

LOCAL GOVERNMENT

Municipal governments make and implement policies within a town. Municipal policymaking bodies may be called by different names including council, committee, commission or board of trustees. People are elected to serve on these local governing bodies. They pass local ordinances, enact a budget and determine the local government share of taxes paid by members of their community.

Boards of Education make and implement policies, goals, and objectives for a school district. While boards of education do not run the day-to-day workings of a district, they do oversee the overall operation of the district and are responsible for developing and adopting a budget, approving a collective bargaining agreement, and providing adequate facilities and equipment. Most boards of education are elected in November, but some are appointed.

How are administrative code and regulations made?

The process of developing or changing regulations is called "rulemaking." New rulemaking can happen when there is new legislation, a change in agency/governmental policy, an executive order issued by the governor, a court decision, or a federal requirement.

Code/regulations usually go through the following steps:

- Discussions at two State Board meetings.
- A public testimony session following discussion.
- Publication of the proposed code in *The New Jersey Register*.
- Following publication, a public comment period, usually 60 days, and another public testimony session.
- Adoption of the code by the State Board, after which it is published in the *Register* with its effective date.

★ Want to see the action?

The Legislature usually meets on Mondays and Thursdays in Trenton. Check the schedule at njleg.state.nj.us. The State Board meets monthly at the Department of Education in Trenton. Check the agenda at <https://www.nj.gov/education/sboe/meetings/schedule/index.shtml>

How does NJEA decide which candidates to support?

By supporting candidates for public offices who believe in public schools and public school employees, we can make sure that we are empowering the right people to make these decisions for us.

Regardless of whether the election is for federal, state or local offices, all decisions to endorse candidates are made solely by NJEA members.

In each case, candidates are given the opportunity to share their views by filling out a questionnaire and/or meeting with a local screening committee of NJEA members that reflects the diversity of our membership.

The local screening committee votes on whether to recommend candidates for endorsement.

NJEA PAC Operating Committee

In state elections, the recommendations of the local interview team are considered and voted upon by the NJEA PAC Operating Committee. This is a committee made up of 125 NJEA members currently serving our association as an NJEA officer, county president, or as a member of NJEA's Executive, Government Relations, or Congressional Contact committees. The NJEA Preservice president, as well as several New Jersey Retirees' Education Association (NJREA) representatives, also serve on the NJEA PAC Operating Committee.

In federal elections, the NJEA PAC Operating Committee uses the same process to recommend candidates for final approval to the NEA Fund for Children and Public Education.

★ Local and county associations can make endorsements in races within their jurisdiction if they get approval from their membership to initiate the process, create a screening committee that is inclusive of the entire association, and give all major party candidates the opportunity to be screened. Upon making an endorsement, presidents or LAT chairs can request assistance for endorsed candidates through the web apps tool on njea.org.

How can you influence elected and appointed officials?

Join your LAT

Become a member of your local Legislative Action Team (LAT). LATs are a network of NJEA members at the county and local levels who communicate legislative and political information to decision makers as well as to their fellow NJEA members. To attend an LAT, contact the county association. Find their information at actioncenter.njea.org/lat

Support NJEA PAC

Members can support NJEA PAC in three ways:

- Become an NJEA PAC Member.
- Support NJEA PAC-endorsed candidates at the polls.
- Volunteer to support pro-education candidates running for office.

Stay informed

- Connect through text messaging. To receive text messages from NJEA on hot topics and issues that matter to you, text **UNITY** to **738674** on your mobile phone. Have an issue that you're passionate about? After you opt in, text one of our keywords such as **PENSION, ESP, TESTING, HIGHER ED** or **CHANGE** (for our political campaigns) to **738674** to receive specialized messages on these important topics.
- Make sure NJEA has your current personal email address on file so you never miss an important update. Sign in to njea.org using your PIN or email and password. Go to your profile and verify your information.
- Read the **NJEA Review**. Learn more about the issues, the players and NJEA's plan of action.
- Visit actioncenter.njea.org to find out what you need to know and what you need to do! Go to the Action Center to access NJEA position statements on pending legislation, information on current issues and to take action to protect public education and public school employees.
- Use social media to connect and advocate! NJEA's Instagram account [@insta_njea](https://www.instagram.com/insta_njea), Facebook page, [New Jersey Education Association](https://www.facebook.com/NewJerseyEducationAssociation), and Twitter, [@NJEA](https://twitter.com/NJEA), give you the links and news to help every NJEA member, parent and voter in the state understand the impact that policy decisions have on our students and our communities.

★ Vote! Resources for voters

Find your polling place:
nj.gov/state/elections

Voter registration:
nj.gov/state/elections/voter-registration.shtml

Vote by mail:
<https://nj.gov/state/elections/vote-by-mail.shtml>

N.J. Division of Elections:
njelections.org



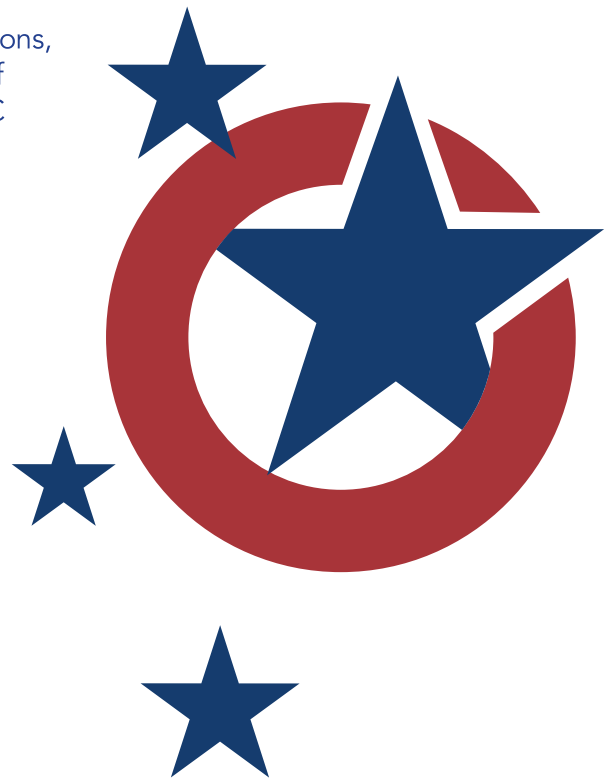
BECOME A PAC MEMBER TODAY!

NJEA PAC is your voice for public policy **ADVOCACY!**

From the day you start working to the day you retire, and even beyond, NJEA members benefit from the advocacy NJEA PAC provides every single day. Whether it's your daily working conditions, your salary and benefits, the curriculum you teach, the security of your pension, or due process rights for ESP members, NJEA PAC works for you to protect and expand your rights.

Like it or not, public officials like the Governor and state legislators all the way down to your local school board members make decisions that affect your professional life, regardless of your job title. Some are elected, and some are appointed by those that are elected, but they all have the power to impact your job.

NJEA PAC is our collective voice that we use to advocate for public policy that strengthens public education. If you're not a member, you're benefitting from the voice of thousands of your fellow educators while remaining silent yourself. Each member sets their own PAC membership level, with a minimum of \$1.00 per month. It may not seem like much, but that's the power of unity. Your PAC member dues come out along with your NJEA dues; all you need to do is sign up. When we all pitch in together, we win, so join NJEA PAC today.



Benefits of PAC Membership

- ✓ *Higher salaries*
- ✓ *Affordable healthcare*
- ✓ *More school funding*
- ✓ *Educator voice in school curriculum*
- ✓ *Improved working conditions*
- ✓ *A secure pension in retirement*

But wait, there's more!

- ✓ *NJEA PAC member lapel pin*
- ✓ *NJEA PAC digital newsletter subscription*
- ✓ *Special badge insignia at NJEA conferences*
- ✓ *Access to special PAC member-only events*

**Scan here to join NJEA PAC
or visit njea.org/PAC**



Contact your lawmakers about pending legislation

Tips for contacting your lawmakers

Writing a letter or email: the most effective letters and emails are individually written and personalized rather than form letters simply signed and sent. However, it is critical that you double-check your spelling and punctuation. As educators, you are held to a higher standard.

- Address your letter to "The Honorable _____." If you want a response, be sure to include your return address.
- In the salutation of your letter, refer to the individual as Governor, Lt. Governor, Senator, Assemblyman/Assemblywoman, or Representative.
- Be sure to mention your full name, address and position in the public schools. Identify yourself as either a resident of, or an employee who works in the legislator's district, or as a member of an organization interested in the legislation.
- If you are writing in regard to a specific bill, identify it by number and title in your letter. State your position (support, oppose, wish to amend). Please remember to THANK the lawmaker for considering your view.
- Limit your letter to a single subject or piece of legislation – and only one page.

Making a phone call: identify yourself (name, address, your school and position).

- You do not need to speak directly with the lawmaker. Speaking with his or her legislative aide is a very effective way of getting your point across. Always ask for the name and position of the person to whom you are speaking.
- If you are calling about a specific bill, be sure to use the proper name and number. Be sure to ask for the legislator's position.
- Remember to listen as well as speak and offer to send additional information supporting your opinion, if appropriate.
- THANK the person for speaking with you.

You can also use Facebook or Twitter to communicate directly with legislators.

See Page 15 for the district index followed by lawmakers and their contact information.

State Board members

Contact members of the State Board about proposed regulations

Kathy Goldenberg, president	Burlington
Andrew Mulvihill, vice president	Sussex
Arcelio Aponte	Middlesex
Mary Beth Berry	Hunterdon
Elaine Bobrove	Camden
Fatimah Burnam-Watkins	Union
Ronald Butcher, Ph.D.	Gloucester
Jack Fornaro	Warren
Mary Elizabeth Gazi	Somerset
Nedd James Johnson, Ed.D.	Salem
Ernest Lepore, Ph.D.	Hudson
Joseph Ricca, Jr., Ed.D.	Morris
Sylvia Sylvia-Cioffi	Monmouth

Interested in learning more about current members' backgrounds? Please go to state.nj.us/education/sboe/about/members.

Tips for contacting the State Board

Writing a letter: the most effective letters are individually written or typed rather than form letters you simply sign. However, it is critical that you double-check your spelling and punctuation. As educators, you are held to a higher standard.

- Be sure to mention your full name, address and position in the public schools. Remember that the State Board votes on regulations (*education code*), not legislation. Cite the specific item of code that you wish to address (e.g. *Educator Effectiveness* or *Special Education*).
- Limit your letter to a single subject or item of code – and only one page.
- Address the envelope to the State Board of Education and mail it to:
**NJDOE, State Board Office, P.O. Box 500,
Trenton, NJ 08625-0500.**

Speaking at a public testimony session: generally, public testimony sessions are held the first Wednesday of every month at 2 p.m. in Trenton.

- Dates, topics for testimony, and which sessions are "open topic" (*held three times a year*) are published in advance at state.nj.us/education/sboe. Click "meetings" found on the left side of the page.
- To speak during a public testimony session, you must register in advance online or call the State Board office at 609-376-3500.

Submitting written testimony: if you are unable to attend a public session, you may submit written comments on the topic to be considered by the State Board. Mail it to:

**NJDOE, State Board Office, P.O. Box 500,
Trenton, NJ 08625-0500**

NJEA Officers

Sean M. Spiller,
president (*center*),
Steve Beatty,
vice president (*left*),
Petal Robertson,
secretary-treasurer (*right*)



When you are an NJEA member you stand with more than 200,000 people who share your values across the state – and together, we make great things happen.

Meet some of the NJEA leaders and staff working to help you make a difference in our state

NJEA Executive Director's Office

Steve Swetsky
Executive Director

Kevin Kelleher
Deputy Executive Director

NEA Directors

NEA Directors advocate for NJEA members on NEA policy and at the federal level.

There are 11 NEA Directors who represent New Jersey, including two ESP-at-Large members

Brenda Brathwaite
Laurie Gibson-Parker
Anita Kober
Robert La Morte
Sue McBride
Peter Moran
Barbara Rheault

James Frazier, ESP-at-Large
Temika Langston-Myers, ESP-at-Large
Ashanti Rankin, ESP-at-Large
Stacy Yanko, ESP-at-Large

NJEA Government Relations Division



*Al Beaver
Director*



Marybeth Beichert



Eloy Delgado



Mike Flynn



Michael Giglio



Sean Hadley



Anna Hanzas



Mary Kemery



Carol McWilliams



Sabrina Moore



Francine Pfeffer



Christie Procell



Carolyn Thompson

NJEA's Government Relations (GR) Division coordinates NJEA's legislative activities and political campaigns and is responsible for monitoring the functions of government departments, bureaus and agencies. The GR Division analyzes and reports on legislation, testifies before legislative committees and executive agencies, coordinates state and federal lobbying efforts, provides legislative and political action training to members, and organizes members for legislative and political action. GR staff assists counties in conducting Legislative Action Team (LAT) meetings and works to help NJEA members develop strong and positive relationships with elected officials at all levels of government. Division staff also coordinate NJEA's Political Leadership Academy program, which provides members with the tools and information they need to run for political office.

NJEA 609-599-4561

Al Beaver
Marybeth Beichert
Eloy Delgado
Michael Flynn
Michael Giglio
Sean Hadley
Anna Hanzas
Mary Kemery
Carol McWilliams
Sabrina Moore
Francine Pfeffer
Christie Procell
Carolyn Thompson

ext.

2208
2247
2273
2328
2452
2344
2343
2327
2266
2395
2326
2258
2358

email

abeaver@njea.org
mbeichert@njea.org
edelgado@njea.org
miflynn@njea.org
mgiglio@njea.org
shadley@njea.org
ahanzas@njea.org
mkemery@njea.org
cmcwilliams@njea.org
smoore@njea.org
fpfeffer@njea.org
cprocell@njea.org
cthompson@njea.org

NJEA Government Relations Committee



The NJEA Government Relations Committee lobbies state legislators and other political leaders and chairs screening committees in New Jersey legislative races.

Christina Dare	Chairperson	Brian Adams, Mark Eckert	Morris
Anthony Angelozzi, Erica Walk Polito	Atlantic	Susan Morgan	Ocean
Julia Guttilla, Howard Lipoff	Bergen	Dennis Carroll, Donna Reaver	Passaic
Christine Hewitt, Steven Nahill	Burlington	Kenneth Buck, Colleen Gilmartin	Salem
George Kemery, Dianna Morris	Camden	Daniel Epstein, Henry Goodhue	Somerset
Cynthia Rosenberg	Cape May	Angela L. DeLuccia	Sussex
Nicole Carminati, Temika Langston-Myers	Cumberland	Joanne Barrett, Nancy Lucas-Miller	Union
Christopher Cannella, Jacqueline White	Essex	Erin Durkin	Warren
Brian D'Ottavio, Ryan Griffin	Gloucester	Susan Maurer.....	NJREA
Rosanne Versaci, Gene Woods	Hudson	Olivia Haas, Brian Reilly.....	NJEA
Marie Corfield	Hunterdon		Preservice
Grace Rarich, Lisa Rizziello	Mercer	Patricia Kebrdle	CC Cmte.
Beth Borrus.....	Middlesex		Chairperson
Chiarina Guzik, Erin Wheeler	Monmouth	Marybeth Beichert	staff contact

NJEA Congressional Contact Committee



The NJEA Congressional Contact Committee maintains contact with New Jersey's congressional delegation and chairs screening committees in congressional races.

Patricia Kebrdle	Chairperson	Andrew Allard, Ezzio Bustamante	Union
Heather Flaim	Atlantic	Vacancy	Warren
Stacey Brown, Christopher Sheridan	Bergen	Mecheline Farhat	Higher Ed
Jason Pope	Burlington	Brenda Brathwaite	NEA Director
Johnathan Maxson	Camden	James Frazier	NEA Director
Walter Johnson	Cape May	Laurie Gibson-Parker	NEA Director
Damita White-Morris	Cumberland	Anita Kober	NEA Director
Jennifer Bailey, Cameron Parke	Essex	Robert La Morte	NEA Director
Laurie Boyle	Gloucester	Temika Langston-Myers	NEA Director
Rosanne Versaci	Hudson	Sue McBride	NEA Director
Efrain Monterroso	Mercer	Peter Moran	NEA Director
Christopher Finnegan	Middlesex	Ashanti Rankin	NEA Director
Christopher Collins, Jacqueline Kruzik	Monmouth	Barbara Rheault	NEA Director
William Cole	Morris	Stacy Yanko	NEA Director
Joshua Eckersley	Ocean	Sarah Adamo	NJEA
Tara Temprano	Passaic		Preservice
Jesse Stemberger	Salem	Susan Clark	NJREA
Theresa Fuller	Somerset	Christina Dare	GR Cmte.
Susan Davis	Sussex		Chairperson
		Sean Hadley, Esq., Anna Hanzes	staff contacts

Meet the New Jersey Retirees' Education Association



Seated L-R: Joan Wright, Kitty Sausa Standing L-R: Ron Burd, Doriann Dodulik-Swern, Mary Clements

NJREA is dedicated to improving the quality of life for retired educational personnel. As the daytime face of NJEA, our NJREA leaders work with NJEA & NEA to organize and keep retired members informed, pass beneficial state and federal legislation, and get friends of the educational community elected.

Joan Wright	President
Harriet "Kitty" Sausa	First Vice President
Ronald Burd.....	Second Vice President
Mary Clements	Secretary
Doriann Dodulik-Swern	Treasurer
Judy Perkins	Immediate Past President
Roger Baker	NJEA DA Representative
Jacqui Greadington	NJEA DA Representative
Barbara James	NJEA DA Representative
Linda Calandra	DA Alternate Representative
Joan Jensen	DA Alternate Representative
Joanne Palladino	DA Alternate Representative

NJREA Government Relations Committee

The members of the NJREA Government Relations Committee lobby state legislators and other political leaders, serve on screening committees for state and federal races, and organize members in political activities for endorsed candidates.

Susan Maurer	Chairperson
Susan Clark	Co-Chairperson
Ron Burd	Officer Liaison

NJREA GR COMMITTEE – NORTH

Susan Vigilante	Coordinator
Joe Macaluso	Asst. Coordinator
Eileen Hooper, Rita Sellars	Bergen
Brenda Hofler-Battle, Stephen McCray	Essex
Donna Mirabelli, Frank Mazzone	Hudson
Timothy McGrail, Virginia Osborne	Morris
Sophia Jones, David Lowe	Passaic
Vacancy.....	Sussex
Patricia Kollar, Michael Kruczek	Warren

NJREA GR COMMITTEE – CENTRAL

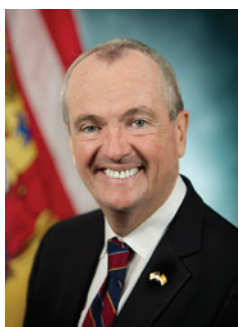
Carol Cousins	Coordinator
Renee Mengistab	Asst. Coordinator
Vicki Fox, Brenda Simpson	Hunterdon
Johanna Capasso, Thomas Harrington	Mercer
Karen Rubio, Diane Tighe	Middlesex
Brian McLaughlin, Judith Strollo	Monmouth
Gloria Dix-Adkinson, Walter Preston	Ocean
Skip Emanuelli, Kristina Fallon Tomaino	Somerset
Lisa Quackenbush, John Zurka	Union

NJREA GR COMMITTEE – SOUTH

Carol Sabo	Coordinator
Susan Ronca	Asst. Coordinator
Linda Wallace, Kathy Zeigenfus	Atlantic
Cheryl Friedman, Toni Guerra	Burlington
Beth Egan, Larry Zahn	Camden
Kathleen Parker, Diane Stelacio	Cape May
William Hartman	Cumberland
Roger Baker, Linda Behm	Gloucester
Pamela McNamee, Marilyn Mortimer	Salem
Marybeth Beichert.....	staff contact

New Jersey Government Directory

Executive Branch



Governor
Phil Murphy (D)
Office of the Governor
P.O. Box 001
Trenton, NJ 08625
609-292-6000
nj.gov/governor/contact



Lieutenant Governor
Sheila Y. Oliver (D)
P.O. Box 001
Trenton, NJ 08625
609-292-6420
nj.gov/governor/admin/lt/

New Jersey Legislature



Assembly
Speaker
Craig Coughlin (D)
AsmCoughlin@njleg.org



Assembly
Majority Leader
Lou Greenwald (D)
AsmGreenwald@njleg.org



Assembly
Minority Leader
John DiMaio (R)
AsmDiMaio@nileq.org



Senate
President
Nicholas Scutari (D)
SenScutari@njleg.org



Senate
Majority Leader
M. Teresa Ruiz (D)
SenRuiz@njleg.org



Senate
Minority Leader
Steven Oroho (R)
SenOroho@nileq.org

Congressional/Legislative district index Your congressional district (C) denotes your representation in Washington, D.C., while the legislative district (L) refers to state lawmakers in Trenton.

<u>Atlantic</u>	<u>C L</u>								
Absecon	2 2	Bogota	5 37	Mahwah	5 39	Teterboro	9 36		
Atlantic City	2 2	Carlstadt	9 36	Maywood	5 38	Upper Saddle River	5 39		
Brigantine	2 2	Cliffside Park	9 36	Midland Park	5 40	Waldwick	5 40		
Buena	2 2	Closter	5 39	Montvale	5 39	Wallington	9 36		
Buena Vista	2 2	Cresskill	9 37	Moonachie	9 36	Washington	5 39		
Corbin City	2 1	Demarest	5 39	New Milford	5 38	Westwood	5 39		
Egg Harbor City	2 2	Dumont	5 39	North Arlington	9 36	Woodcliff Lake	5 39		
Egg Harbor Twp.	2 2	East Rutherford	9 36	Northvale	5 37	Wood-Ridge	9 36		
Estell Manor City	2 1	Edgewater	9 32	Norwood	5 39	Wyckoff	5 40		
Folsom	2 2	Elmwood Park	9 35	Oakland	5 39				
Galloway Twp.	2 9	Emerson	5 39	Old Tappan	5 39	<u>Burlington</u>	<u>C L</u>		
Hamilton Twp.	2 2	Englewood City	9 37	Oradell	5 38	Bass River	2 9		
Hammonton Town	2 8	Englewood Cliffs	9 37	Palisades Park	9 37	Beverly	3 7		
Linwood City	2 2	Fair Lawn	5 38	Paramus	5 38	Bordentown City	3 7		
Longport	2 2	Fairview	8 32	Park Ridge	5 39	Bordentown Twp.	3 7		
Margate City	2 2	Fort Lee	9 37	Ramsey	5 39	Burlington City	3 7		
Mullica Twp.	2 2	Franklin Lakes	5 40	Ridgefield	9 36	Burlington Twp.	3 7		
Northfield City	2 2	Garfield City	9 35	Ridgefield Park	9 36	Chesterfield	3 12		
Pleasantville City	2 2	Glen Rock	5 38	Ridgewood	5 40	Cinnaminson	3 7		
Port Republic City	2 9	Hackensack City	5 37	River Edge	5 38	Delanco	3 7		
Somers Point City	2 2	Harrington Park	5 39	River Vale	5 39	Delran	3 7		
Ventnor City	2 2	Hasbrouck Heights	9 38	Rochelle Park	5 38	Eastampton	3 8		
Weymouth Twp.	2 1	Haworth	5 39	Rockleigh	5 37	Edgewater Park	3 7		
		Hillsdale	5 39	Rutherford	9 36	Evesham	3 8		
		Ho-Ho-Kus	5 40	Saddle Brook	9 38	Fieldsboro	3 7		
<u>Bergen</u>	<u>C L</u>	Leonia	9 37	Saddle River	5 39	Florence	3 7		
Allendale	5 40	Little Ferry	9 36	South Hackensack	9 36	Hainesport	3 8		
Alpine	5 37	Lodi	5 38	Teaneck	5, 9 37	Lumberton	3 8		
Bergenfield	5 38	Lyndhurst	9 36	Tenaflly	9 37				

Mansfield	3 8	Voorhees	1 6	Mantua	2 5	Mercer	C L
Maple Shade	1 6	Waterford	2 8	Monroe	1 4	East Windsor	12 14
Medford	3 8	Winslow	1 4	National Park	1 3	Ewing	12 15
Medford Lakes	3 8	Woodlynne	1 5	Newfield	2 3	Hamilton	4 14
Moorestown	3 7	Cape May	C L	Paulsboro	1 3	Hightstown	12 14
Mount Holly	3 8	All municipalities	2 1	Pitman	2 4	Hopewell Boro	12 15
Mount Laurel	3 7	Cumberland	C L	South Harrison	2 3	Hopewell Twp.	12 15
New Hanover	3 12	Bridgeton	2 3	Swedesboro	2 3	Lawrence	12 15
North Hanover	3 12	Commercial	2 1	Washington	1 4	Pennington	12 15
Palmyra	1 7	Deerfield	2 3	Wenonah	1 5	Princeton Boro	12 16
Pemberton Boro	3 8	Downe	2 1	West Deptford	1 3	Princeton Twp.	12 16
Pemberton Twp.	3 8	Fairfield	2 1	Westville	1 5	Robbinsville	4 14
Riverside	3 7	Greenwich	2 1	Woodbury	1 5	Trenton	12 15
Riverton	3 7	Hopewell	2 1	Woodbury Heights	1 3	West Windsor	12 15
Shamong	3 8	Lawrence	2 1	Hudson	C L	Middlesex	C L
Southampton	3 8	Maurice River	2 1	Bayonne	8, 10 31	Carteret	6 19
Springfield	3 8	Millville	2 1	East Newark	8 32	Cranbury	12 14
Tabernacle	3 9	Shiloh	2 1	Guttenberg	8 32	Dunellen	12 22
Washington	2 9	Stow Creek	2 1	Harrison	8 32	East Brunswick	12 18
Westampton	3 8	Upper Deerfield	2 3	Hoboken	8 33	Edison	6 18
Willingboro	3 7	Vineland	2 1	Jersey City	8, 10 31, 33	Helmetta	12 18
Woodland	3 8	Essex	C L	Kearny	8, 9 32	Highland Park	6 18
Wrightstown	3 12	Belleville	8 29	North Bergen	8 32	Jamesburg	12 14
Camden	C L	Bloomfield	10, 11 28	Secaucus	9 32	Metuchen	6 18
Audubon	1 5	Caldwell	11 27	Union City	8 33	Middlesex	12 22
Audubon Park	1 5	Cedar Grove	11 40	Weehawken	8 33	Milltown	12 17
Barrington	1 5	East Orange	10 34	West New York	8 32	Monroe	12 14
Bellmawr	1 5	Essex Fells	11 27	Hunterdon	C L	New Brunswick	6 17
Berlin Boro	1 8	Fairfield	11 26	Alexandria	7 23	North Brunswick	12 17
Berlin Twp.	1 6	Glen Ridge	10 28	Bethlehem	7 23	Old Bridge	6, 12 12
Brooklawn	1 5	Irvington	10 28	Bloomsbury	7 23	Perth Amboy	6 19
Camden	1 5	Livingston	11 27	Califon	7 23	Piscataway	6 17
Cherry Hill	1 6	Maplewood	10 27	Clinton	7 23	Plainsboro	12 14
Chesilhurst	1 4	Millburn	7 27	Clinton Twp.	7 23	Sayreville	6 19
Clementon	1 4	Montclair	10, 11 34	Delaware	7 16	South Amboy	6 19
Collingswood	1 6	Newark	8, 10 28	East Amwell	7 15	South Brunswick	12 16
Gibbsboro	1 6		29	Flemington	7 16	South Plainfield	6 18
Gloucester	1 4	North Caldwell	11 26	Franklin	7 23	South River	12 18
Gloucester City	1 5	Nutley	11 28	Frenchtown	7 23	Spotswood	12 14
Haddon Heights	1 5	Orange	10 34	Glen Gardner	7 23	Woodbridge	6 19
Haddon Twp.	1 6	Roseland	11 27	Hampton	7 23	Monmouth	C L
Haddonfield	1 6	South Orange	10 27	High Bridge	7 23	Aberdeen	6 13
Hi-Nella	1 6	Verona	11 26	Holland	7 23	Allenhurst	6 11
Laurel Springs	1 4	West Caldwell	11 26	Kingwood	7 23	Allentown	4 12
Lawnside	1 5	West Orange	10, 11 27	Lambertville	7 15	Asbury Park	6 11
Lindenwold	1 4	Gloucester	C L	Lebanon Boro	7 23	Atlantic Highlands	6 13
Magnolia	1 5	Clayton	2 3	Lebanon Twp.	7 23	Avon-by-the-Sea	4 30
Merchantville	1 6	Deptford	1 5	Milford	7 23	Belmar	4 30
Mount Ephraim	1 5	East Greenwich	1, 2 3	Raritan	7 16	Bradley Beach	4 30
Oaklyn	1 6	Elk	2 3	Readington	7 16	Brielle	4 30
Pennsauken	1 6	Franklin	2 3	Stockton	7 16	Colts Neck	4 11
Pine Hill	1 8	Glassboro	1 3	Tewksbury	7 23	Deal	6 11
Pine Valley	1 8	Greenwich	1 3	Union	7 23	Eatontown	4 11
Runnemede	1 5	Harrison	2 5	West Amwell	7 15	Englishtown	4 12
Somerdale	1 6	Logan	1 3			Fair Haven	4 13
Stratford	1 6					Farmingdale	4 30
Tavistock	1 6						

Freehold Boro	4 11	Mendham Boro	11 25	Passaic	C L	Montague	5 24
Freehold Twp.	4 11	Mendham Twp.	11 25	Bloomington	11 39	Newton	5 24
Hazlet	6 13	Mine Hill	7 25	Clifton	9 34	Ogdensburg	11 24
Highlands	6 13	Montville	11 26	Haledon	9 35	Sandyston	5 24
Holmdel	4 13	Morris	11 25	Hawthorne	9 38	Sparta	11 24
Howell	4 30	Morris Plains	11 26	Little Falls	11 40	Stanhope	11 24
Interlaken	6 11	Morristown	11 25	North Haledon	11 35	Stillwater	5 24
Keansburg	6 13	Mount Arlington	7 25	Passaic	9 36	Sussex	5 24
Keyport	6 13	Mountain Lakes	11 25	Paterson	9 35	Vernon	5 24
Lake Como	4 30	Mount Olive	7 24	Pompton Lakes	11 40	Walpack	5 24
Little Silver	4 13	Netcong	7 25	Prospect Park	9 35	Wantage	5 24
Loch Arbour	6 11	Parsippany		Ringwood	5 39	Union	C L
Long Branch	6 11	-Troy Hills	11 26	Totowa	11 40	Berkeley Heights	7 21
Manalapan	4 12	Pequanock	11 40	Wanaque	11 39	Clark	7 22
Manasquan	4 30	Randolph	11 25	Wayne	11 40	Cranford	7 21
Marlboro	6 13	Riverdale	11 40	West Milford	5 26	Elizabeth	8 20
Matawan	6 12	Rockaway Boro	11 25	Woodland Park	11 40	Fanwood	12 22
Middletown	4, 6 13	Rockaway Twp.	11 26	Salem	C L	Garwood	7 21
Millstone	4 12	Roxbury	7 25	All municipalities	2 3	Hillside	10 20
Monmouth Beach	6 13	Victory Gardens	11 25	Somerset	C L	Kenilworth	7 21
Neptune City	4 11	Washington	7 25	Bedminster	7 23	Linden	10 22
Neptune Twp.	4 11	Wharton	7 25	Bermards	7 21	Mountainside	7 21
Ocean Twp.	4 11	Ocean	C L	Bernardsville	7 25	New Providence	7 21
Oceanport	6 13	Barneгат	3 9	Bound Brook	12 23	Plainfield	12 22
Red Bank	4 11	Bamegat Light	2 9	Branchburg	7 16	Rahway	10 22
Roosevelt	4 12	Bay Head	4 10	Bridgewater	7 23	Roselle	10 20
Rumson	4 13	Beach Haven	2 9	Far Hills	7 21	Roselle Park	10 21
Sea Bright	6 13	Beachwood	3 9	Franklin	12 17	Scotch Plains	7, 12 22
Sea Girt	4 30	Berkeley	3 9	Green Brook	7 22	Springfield	7 21
Shrewsbury Boro	4 11	Brick	3 10	Hillsborough	7 16	Summit	7 21
Shrewsbury Twp.	4 11	Eagleswood	2 9	Manville	12 16	Union	7, 10 20
Spring Lake	4 30	Harvey Cedars	2 9	Millstone	7 16	Westfield	7 21
Spring Lake Heights	4 30	Island Heights	3 10	Montgomery	7 16	Winfield	7 22
Tinton Falls	4 11	Jackson	4 12	North Plainfield	7 22	Warren	C L
Union Beach	6 13	Lacey Twp.	3 9	Peapack-Gladstone	7 23	Allamuchy	5 24
Upper Freehold	4 12	Lakehurst	4 10	Raritan	7 23	Alpha	7 23
Wall	4 30	Lakewood	4 30	Rocky Hill	7 16	Belvidere	5 24
West Long Branch	6 11	Lavallette	3 10	Somerville	7 16	Blairstown	5 24
Morris	C L	Little Egg Harbor	2 9	S. Bound Brook	12 23	Franklin	7 23
Boonton Town	11 25	Long Beach	2 9	Warren	7 21	Frelinghuysen	5 24
Boonton Twp.	11 25	Manchester	4 10	Watchung	7 21	Greenwich	7 23
Butler	11 26	Mantoloking	3 10	Sussex	C L	Hackettstown	5 23
Chatham Boro	11 21	Ocean	3 9	Andover Boro	5 24	Hardwick	5 24
Chatham Twp.	11 27	Ocean Gate	3 9	Andover Twp.	5 24	Harmony	7 23
Chester Boro	7 25	Pine Beach	3 9	Branchville	5 24	Hope	5 24
Chester Twp.	7 25	Plumsted	4 12	Byram	11 24	Independence	5 24
Denville	11 25	Point Pleasant	3, 4 30	Frankford	5 24	Knowlton	5 24
Dover Town	7 25	Point Pleasant		Franklin	5 24	Liberty	5 24
East Hanover	11 27	Beach	4 10	Fredon	5 24	Lopatcong	7 23
Florham Park	11 27	Seaside Heights	3 10	Green	5 24	Mansfield	5 23
Hanover	11 27	Seaside Park	3 9	Hamburg	5 24	Oxford	5 24
Harding	11 27	Ship Bottom	2 9	Hampton	5 24	Phillipsburg	7 23
Jefferson	11 26	South Toms River	3 9	Hardyston	5 24	Pohatcong	7 23
Kinnelon	11 26	Stafford	2, 3 9	Hopatcong	11 24	Washington Boro	5 23
Lincoln Park	11 26	Surf City	2 9	Lafayette	5 24	Washington Twp.	5 23
Long Hill	7 21	Toms River	3 10			White	5 24
Madison	11 27	Tuckerton	2 9				

State lawmakers

1st LD Cape May & parts of Atlantic & Cumberland

SENATE: Michael J. Testa, Jr. (R) SenTesta@njleg.org
ASSEMBLY: Antwan McClellan (R) AsmMcClellan@njleg.org
Erik Simonsen (R) AsmSimonsen@njleg.org

2nd LD Parts of Atlantic County

SENATE: Vincent J. Polistina (R) SenPolistina@njleg.org
ASSEMBLY: Donald A. Guardian (R) AsmGuardian@njleg.org
Claire S. Swift (R) AswSwift@njleg.org

3rd LD Salem & parts of Cumberland & Gloucester

SENATE: Edward Durr (R) SenDurr@njleg.org
ASSEMBLY: Bethanne McCarthy Patrick (R) AswMcCarthyPatrick@njleg.org
Beth Sawyer (R) AswSawyer@njleg.org

4th LD Parts of Camden & Gloucester

SENATE: Fred H. Madden, Jr. (D) SenMadden@njleg.org
ASSEMBLY: Paul D. Moriarty (D) AsmMoriarty@njleg.org
Gabriela M. Mosquera (D) AswMosquera@njleg.org

5th LD Parts of Camden & Gloucester

SENATE: Nilsa Cruz-Perez (D) SenCruzPerez@njleg.org
ASSEMBLY: William F. Moen, Jr. (D) AsmMoen@njleg.org
William W. Spearman (D) AsmSpearman@njleg.org

6th LD Parts of Burlington & Camden

SENATE: James Beach (D) SenBeach@njleg.org
ASSEMBLY: Louis D. Greenwald (D) AsmGreenwald@njleg.org
Pamela R. Lampitt (D) AswLampitt@njleg.org

7th LD Parts of Burlington

SENATE: Troy Singleton (D) SenSingleton@njleg.org
ASSEMBLY: Herb Conaway, Jr. (D) AsmConaway@njleg.org
Carol A. Murphy (D) AswMurphy@njleg.org

8th LD Parts of Atlantic, Burlington & Camden

SENATE: Jean Stanfield (R) SenStanfield@njleg.org
ASSEMBLY: Michael Torrissi, Jr. (R) AsmTorrissi@njleg.org
Brandon E. Umba (R) AsmUmba@njleg.org

9th LD Parts of Atlantic, Burlington & Ocean

SENATE: Christopher J. Connors (R) SenConnors@njleg.org
ASSEMBLY: DiAnne C. Gove (R) AswGove@njleg.org
Brian E. Rumpf (R) AsmRumpf@njleg.org

10th LD Parts of Ocean County

SENATE: James W. Holzapfel (R) SenHolzapfel@njleg.org
ASSEMBLY: John Catalano (R) AsmCatalano@njleg.org
Gregory P. McGuckin (R) AsmMcGuckin@njleg.org

11th LD Parts of Monmouth

SENATE: Vin Gopal (D) SenGopal@njleg.org
ASSEMBLY: Kim Eulner (R) AswEulner@njleg.org
Marilyn Piperno (R) AswPiperno@njleg.org

12th LD Parts of Burlington, Middlesex, Monmouth & Ocean

SENATE: Samuel D. Thompson (R) SenThompson@njleg.org
ASSEMBLY: Robert D. Clifton (R) AsmClifton@njleg.org
Ronald S. Dancer (R) AsmDancer@njleg.org

13th LD Monmouth County

SENATE: Declan O'Scanlon (R) SenOScanlon@njleg.org
ASSEMBLY: Victoria A. Flynn (R) AswFlynn@njleg.org
Gerard Scharfenberger (R) AsmScharfenberger@njleg.org

14th LD Parts of Mercer & Middlesex

SENATE: Linda R. Greenstein (D) SenGreenstein@njleg.org
ASSEMBLY: Daniel R. Benson (D) AsmBenson@njleg.org
Wayne P. DeAngelo (D) AsmDeAngelo@njleg.org

15th LD Parts of Hunterdon & Mercer

SENATE: Shirley K. Turner (D) SenTurner@njleg.org
ASSEMBLY: Verlina Reynolds-Jackson (D) AswReynoldsJackson@njleg.org
Anthony S. Verrelli (D) AsmVerrelli@njleg.org

16th LD Parts of Hunterdon, Mercer, Middlesex & Somerset

SENATE: Andrew Zwicker (D) AsmZwicker@njleg.org
ASSEMBLY: Roy Freiman (D) AsmFreiman@njleg.org
Sadaf F. Jaffer (D) AswJaffer@njleg.org

17th LD Parts of Middlesex & Somerset

SENATE: Bob Smith (D) SenBSmith@njleg.org
ASSEMBLY: Joe Danielsens (D) AsmDanielsens@njleg.org
Joseph V. Egan (D) AsmEgan@njleg.org

18th LD Part of Middlesex

SENATE: Patrick J. Diegnan, Jr. (D) SenDiegnan@njleg.org
ASSEMBLY: Robert J. Karabinchak (D) AsmKarabinchak@njleg.org
Sterley S. Stanley (D) AsmStanley@njleg.org

19th LD Part of Middlesex County

SENATE: Joseph F. Vitale (D) SenVitale@njleg.org
ASSEMBLY: Craig J. Coughlin (D) AsmCoughlin@njleg.org
Yvonne Lopez (D) AswLopez@njleg.org

20th LD Part of Union County

SENATE: Joseph P. Cryan (D) SenCryan@njleg.org
ASSEMBLY: Reginald W. Atkins (D) AsmAtkins@njleg.org
Annette Quijano (D) AswQuijano@njleg.org

21st LD Parts of Morris, Somerset & Union

SENATE: Jon M. Bramnick (R) AsmBramnick@njleg.org
ASSEMBLY: Michele Matsikoudis (R)
AswMatsikoudis@njleg.org
Nancy F. Munoz (R) AswMunoz@njleg.org

22nd LD Parts of Middlesex, Somerset & Union

SENATE: Nicholas P. Scutari (D) SenScutari@njleg.org
ASSEMBLY: Linda S. Carter (D) AswCarter@njleg.org
James J. Kennedy (D) AsmKennedy@njleg.org

23rd LD Parts of Hunterdon, Somerset & Warren

SENATE: Michael J. Doherty (R) SenDoherty@njleg.org
ASSEMBLY: John DiMaio (R) AsmDiMaio@njleg.org
Erik Peterson (R) AsmPeterson@njleg.org

24th LD Sussex & Parts of Morris & Warren

SENATE: Steven V. Oroho (R) SenOroho@njleg.org
ASSEMBLY: Parker Space (R) AsmSpace@njleg.org
Harold J. Wirths (R) AsmWirths@njleg.org

25th LD Parts of Morris & Somerset

SENATE: Anthony M. Bucco (R) SenBucco@njleg.org
Assembly: Brian Bergen (R) AsmBergen@njleg.org
Aura Dunn (R) AswDunn@njleg.org

26th LD Parts of Essex, Morris & Passaic

SENATE: Joseph Pennacchio (R) SenPennacchio@njleg.org
ASSEMBLY: Christian E. Barranco (R) AsmBarranco@njleg.org
Jay Webber (R) AsmWebber@njleg.org

27th LD Parts of Essex & Morris

SENATE: Richard J. Codey (D) SenCodey@njleg.org
ASSEMBLY: Mila M. Jasey (D) AswJasey@njleg.org
John F. McKeon (D) AsmMcKeon@njleg.org

28th LD Parts of Essex

SENATE: Ronald L. Rice (D) SenRice@njleg.org
ASSEMBLY: Ralph R. Caputo (D) AsmCaputo@njleg.org
Cleopatra G. Tucker (D) AswTucker@njleg.org

29th LD Parts of Essex

SENATE: M. Teresa Ruiz (D) SenRuiz@njleg.org
ASSEMBLY: Eliana Pintor Marin (D) AswPintorMarin@njleg.org
Shanique Speight (D) AswSpeight@njleg.org

30th LD Parts of Monmouth & Ocean

SENATE: Robert W. Singer (R) SenSinger@njleg.org
ASSEMBLY: Sean T. Kean (R) AsmSKean@njleg.org
Edward H. Thomson (R) AsmThomson@njleg.org

31st LD Parts of Hudson

SENATE: Sandra B. Cunningham (D) SenCunningham@njleg.org
ASSEMBLY: Angela V. McKnight (D) AswMcKnight@njleg.org
William B. Sampson (D) AsmSampson@njleg.org

32nd LD Parts of Bergen & Hudson

SENATE: Nicholas J. Sacco (D) SenSacco@njleg.org
ASSEMBLY: Angelica M. Jimenez (D) AswJimenez@njleg.org
Pedro Mejia (D) AsmMejia@njleg.org

33rd LD Parts of Hudson

SENATE: Brian P. Stack (D) SenStack@njleg.org
ASSEMBLY: Annette Chaparro (D) AswChaparro@njleg.org
Raj Mukherji (D) AsmMukherji@njleg.org

34th LD Parts of Essex & Passaic

SENATE: Nia H. Gill, Esq. (D) SenGill@njleg.org
ASSEMBLY: Thomas P. Giblin (D) AsmGiblin@njleg.org
Britnee N. Timberlake (D) AswTimberlake@njleg.org

35th LD Parts of Bergen & Passaic

SENATE: Nelida "Nellie" Pou (D) SenPou@njleg.org
ASSEMBLY: Shavonda E. Sumter (D) AswSumter@njleg.org
Benjie E. Wimberly (D) AsmWimberly@njleg.org

36th LD parts of Bergen & Passaic

SENATE: Paul A. Sarlo (D) SenSarlo@njleg.org
ASSEMBLY: Clinton Calabrese (D) AsmCalabrese@njleg.org
Gary S. Schaer (D) AsmSchaer@njleg.org

37th LD parts of Bergen & Passaic

SENATE: Gordon M. Johnson (D) AsmJohnson@njleg.org
ASSEMBLY: Shama A. Haider (D) AswHaider@njleg.org
Ellen J. Park (D) AswPark@njleg.org

38th LD Parts of Bergen & Passaic

SENATE: Joseph A. Lagana (D) SenLagana@njleg.org
ASSEMBLY: Lisa Swain (D) AswSwain@njleg.org
P. Christopher Tully (D) AsmTully@njleg.org

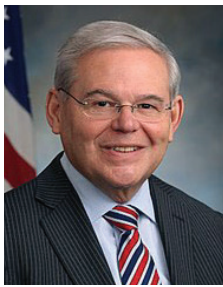
39th LD Parts of Bergen & Passaic

SENATE: Holly Schepisi (R) AswSchepisi@njleg.org
ASSEMBLY: Robert Auth (R) AsmAuth@njleg.org
DeAnne C. DeFuccio (R) AswDeFuccio@njleg.org

40th LD parts of Bergen, Essex, Morris & Passaic

SENATE: Kristin Corrado (R) SenCorrado@njleg.org
ASSEMBLY: Christopher P. DePhillips (R) AsmDePhillips@njleg.org
Kevin J. Rooney (R) AsmRooney@njleg.org

Federal lawmakers



Robert Menendez (D)
210 Hudson St.
Harborside 3, Suite 1000
Jersey City, NJ 07311
973-645-3030
528 Hart Senate Office Bldg.
Washington, DC 20510
202-224-4744
menendez.senate.gov



Cory Booker (D)
One Gateway Center, 23rd Fl.
Newark, NJ 07102
973-639-8700
717 Hart Senate Office Bldg.
Washington, DC 20510
202-224-3224
booker.senate.gov

Representatives

District 1

Donald Norcross (D)
10 Melrose Ave.,
Suite 210
Cherry Hill, NJ 08003
856-427-7000
norcross.house.gov

District 2

Jeff Van Drew (R)
5914 Main St., Suite 103
Mays Landing, NJ 08330
609-625-5008
vandrew.house.gov

District 3

Andy Kim (D)
429 John F. Kennedy Way
P.O. Box 9
Willingboro, NJ 08046
856-703-2700
kim.house.gov

District 4

Christopher Smith (R)
112 Village Center Dr.
2nd Floor
Freehold, NJ 07728
732-780-3035
chrissmith.house.gov

District 5

Josh Gottheimer (D)
65 Harristown Rd.,
Suite 104
Glen Rock, NJ 07452
201-389-1100
gottheimer.house.gov

District 6

Frank Pallone (D)
504 Broadway
Long Branch, NJ 07740
732-571-1140
pallone.house.gov

District 7

Tom Malinowski (D)
75-77 N. Bridge St.
Somerville, NJ 08876
908-547-3307
malinowski.house.gov

District 8

Albio Sires (D)
800 Anna St.
Elizabeth, NJ 07201
908-820-0692
sires.house.gov

District 9

Bill Pascrell (D)
200 Federal Plaza,
Suite 500
Paterson, NJ 07505
973-523-5152
pascrell.house.gov

District 10

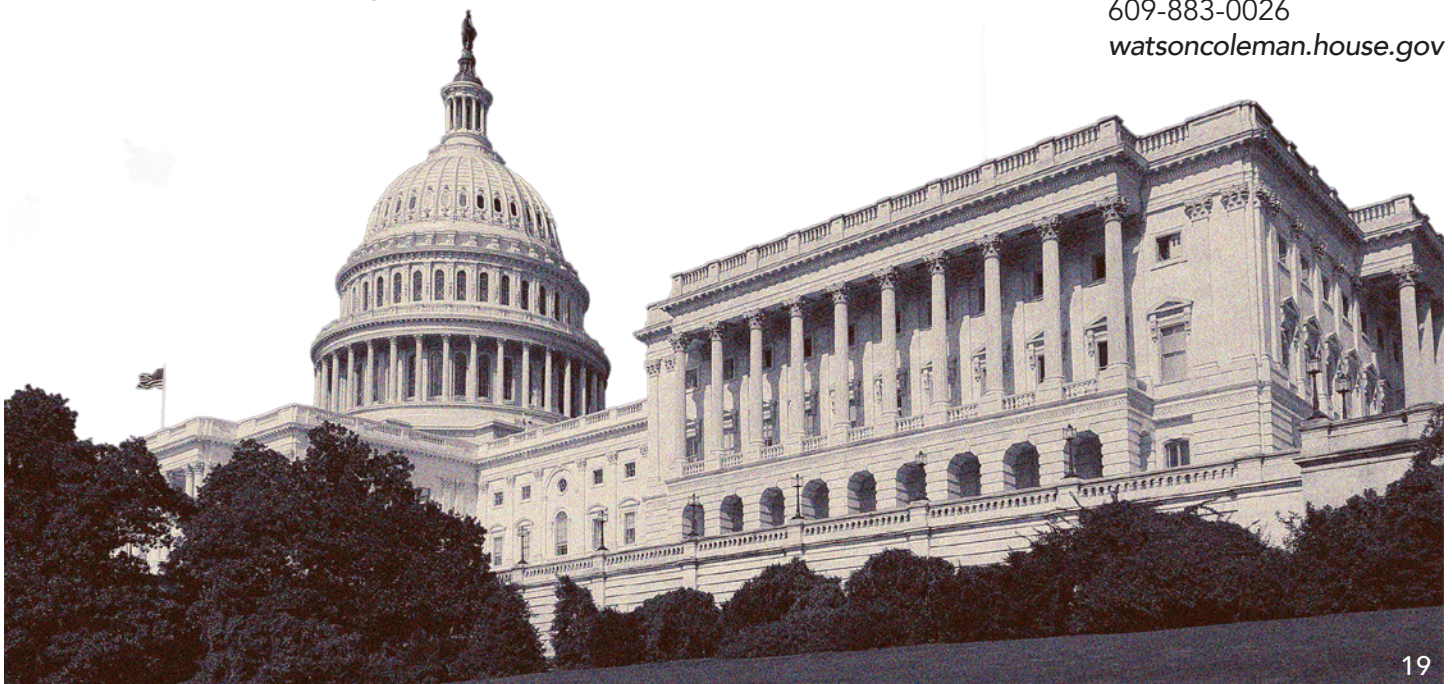
Donald Payne, Jr. (D)
LeRoy F. Smith, Jr.
Public Safety Building
60 Nelson Place, 14th Fl.
Newark, NJ 07102
973-645-3213
payne.house.gov

District 11

Mikie Sherrill (D)
8 Wood Hollow Rd.,
Suite 203
Parsippany, NJ 07054
973-526-5668
sherrill.house.gov

District 12

Bonnie Watson Coleman (D)
850 Bear Tavern Rd.,
Suite 201
Ewing, NJ 08628
609-883-0026
watsoncoleman.house.gov



Dates to remember 2022

November School Board, Primary and General Elections

- 4/4**.....Deadline for nomination petition for democratic and republican candidates for US House of Representatives
- 5/17**.....Voter registration deadline (for June 7 primary elections)
- 5/31**.....Vote by Mail Ballot request received for the primary elections
- 6/3-5**.....Early voting available
- 6/6**.....Deadline for in-person Vote by Mail Ballot for primary elections (by 3 p.m.)
- 6/6**.....Deadline for independent candidate nomination petitions for general election (by 4 p.m.)
- 6/7**Deadline for nomination petition of direction nomination of candidates for member of the US house of representatives
- 6/7**PRIMARY ELECTION DAY
- 6/13**.....Municipal party reorganizations
- 6/14**.....County party reorganizations
- 7/25**.....Deadline for nomination petitions for school board candidates
- 10/18**....Voter registration deadline (for Nov. 8 general election)
- 11/1**.....Vote by Mail Ballot request received for the general election
- 11/4-6** .Early voting available
- 11/7**.....Deadline for in-person Vote by Mail Ballot for general election (by 3 p.m.)
- 11/8**Vote by Mail ballots postmarked or received
- 11/8**GENERAL & SCHOOL BOARD ELECTION DAY

April Special School Board Elections

(Only districts that did not move their election to November)

- 2/28**.....Deadline for candidates to file nominating petitions (by 4 p.m.)
- 3/29**Voter Registration Deadline for April Special School Board Elections
- 4/12**.....Deadline to apply for Vote by Mail Ballot due by mail to county clerk
- 4/18**Deadline for in-person Vote by Mail Ballot (by 3 p.m.)
- 4/19**APRIL SPECIAL SCHOOL BOARD ELECTION DAY

Municipal Nonpartisan Elections

- 3/7**Deadline for nomination petitions for municipal nonpartisan elections
- 4/19**Voter registration deadline for municipal nonpartisan elections

★ **These dates are unofficial until certified by the New Jersey Division of Elections.**
Please visit the following sites for more information:

Candidate petition filing information

<https://nj.gov/state/elections/candidate-information.shtml>

Voter registration and ballot mail-in information <https://nj.gov/state/elections/vote.shtml>

Election dates <https://nj.gov/state/elections/election-information-2021.shtml>

Additional Resources: usvotefoundation.org